



I Lively (Former CEnv FCIOB MCABE)
Lively Professional Services Ltd

93 ST KEVINS DRIVE KIRKBY LIVERPOOL L32 1BB

Snagging Report

Tuesday, 22 September 2020

95 Issues Identified



LOCATION 1 93 ST KEVIN'S DRIVE KIRKBY L32 1BB

Assigned To Identification
Summary

The overall finish of the house is poor with little attention to detail, in particular the decoration throughout is a poor standard and gives the house the feeling that it was rushed to completion.

The extractor ducts and boiler flue require cavity trays installing to comply with NHBC Standards Chapter 6.1.17



LOCATION 2 FRONT ELEVATION

Assigned To Landscaper
The front bed needs planting.



LOCATION 3 FRONT ELEVATION

Assigned To Joiner
The front door cill needs an end cap fitting.



LOCATION 4 FRONT ELEVATION

Assigned To Groundworker

The gap both sides of the front door needs filling with limestone chippings.



LOCATION 5 FRONT ELEVATION

Assigned To Bricklayer

The timber needs removing from over the front door lintel.



LOCATION 6 FRONT ELEVATION

Assigned To Plastic Surgeon

The artstone cill is damaged and needs repairing. If the cill is painted the other artstone will need painting to match.



LOCATION 7 FRONT ELEVATION

Assigned To Bricklayer

The brick packer needs removing from underneath the head on the right hand hall window.



LOCATION 8 FRONT ELEVATION

Assigned To Bricklayer

The nails need removing from the brickwork and repointing to the left of the kitchen window.



LOCATION 9 FRONT ELEVATION

Assigned To Mastic

The wire and pipe need sealing.



LOCATION 10 FRONT ELEVATION

Assigned To Brick Cleaner

The artstone cills and heads need the mortar staining removing.



LOCATION 11 FRONT ELEVATION

Assigned To Roofer

The bottom tile on the right hand valley is kicking.



LOCATION 12 FRONT ELEVATION

Assigned To Roofer

The bottom tiles are kicking on the left hand valley.



LOCATION 13 RIGHT HAND ELEVATION

Assigned To Groundworker

The drive needs final surfacing, please supply a date.



LOCATION 14 REAR ELEVATIO

Assigned To Bricklayer

The extractor duct needs a cavity tray installed above it.
NHBC Standards 6.1.17.



LOCATION 15 REAR ELEVATION

Assigned To Bricklayer

Several areas of pointing required on the rear elevation.



LOCATION 16 REAR ELEVATION

Assigned To Bricklayer

There are no cavity trays installed above the extractor a boiler flue ducts.

NHBC Standards 6.1.17



LOCATION 17 FRONT ELEVATION

Assigned To Plastic Surgeon

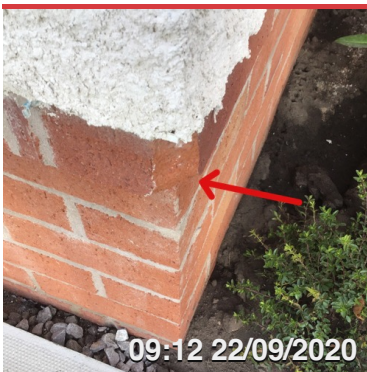
The upstand on the canopy is damaged and needs repairing.



LOCATION 18 FRONT ELEVATION

Assigned To Renderer

The edges of the render where it meets the brickwork needs tidying.



LOCATION 19 FRONT ELEVATION

Assigned To Bricklayer

The brick is damaged on the right hand corner below the render.



LOCATION 20 HALL

Assigned To Decorator

The frame needs caulking and behind the door chain.



LOCATION 21 HALL

Assigned To Decorator

The wall needs sanding to the right of the window board.



LOCATION 22 HALL

Assigned To Decorator

The wall needs filling underneath the double socket.



LOCATION 23 DOWNSTAIRS CLOAKS

Assigned To Decorator

The resin needs removing from the casing and door, and sealed before touching up.



LOCATION 24 DOWNSTAIRS CLOAKS

Assigned To Decorator

The casing needs filling in several places.



LOCATION 25 DOWNSTAIRS CLOAKS

Assigned To Plumber

The toilet seat is loose.



LOCATION 26 DOWNSTAIRS CLOAKS

Assigned To Wall Tiller/ Decorator

The grout needs tidying and the architrave is grinning, the edge also needs painting.



LOCATION 27 DOWNSTAIRS CLOAKS

Assigned To Decorator

The architraves need caulking.



LOCATION 28 HALL

Assigned To Decorator

The paint runs need removing from the cloaks door and architrave.



LOCATION 29 HALL

Assigned To Decorator

The wall needs filling above the light switch.



LOCATION 30 LOUNGE

Assigned To Decorator

The door edge needs filling.



LOCATION 31 LOUNGE

Assigned To Plastic Surgeon

The top edge of the front window frame is damaged where materials have been brought through it.



LOCATION 32 LOUNGE

Assigned To Plumber/ Plasterer

The open gas point needs a cover plate fitting and patching.



LOCATION 33 LOUNGE

Assigned To Window Fitter

The left hand patio door handle is damaged and needs replacing.



LOCATION 34 LOUNGE

Assigned To Decorator

The skirting board both sides of the patio doors need caulking.



LOCATION 35 KITCHEN

Assigned To Window Fitter

The glass is scratched in the front window and visible from 2m.



LOCATION 36 KITCHEN

Assigned To Decorator

The understairs cupboard casing needs filling in several places.



LOCATION 37 KITCHEN

Assigned To Decorator

The understairs cupboard architrave needs caulking.



LOCATION 38 UNDERSTAIRS CUPBOARD

Assigned To Decorator

The wall needs filling behind the consumer unit.



LOCATION 39 KITCHEN

Assigned To Kitchen Fitter

Both end panels in the drawer unit have been damaged when the timber stretcher has been removed.



LOCATION 40 KITCHEN

Assigned To Plastic Surgeon

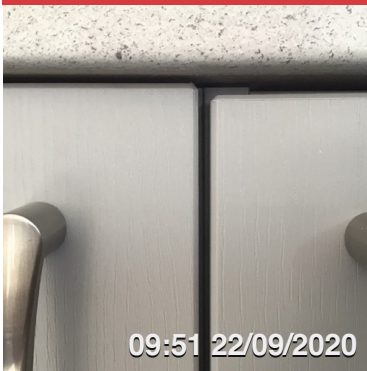
The bottom of the plinth has been damaged underneath the freezer, and needs repairing.



LOCATION 41 KITCHEN

Assigned To Kitchen Fitter/ Plasterer

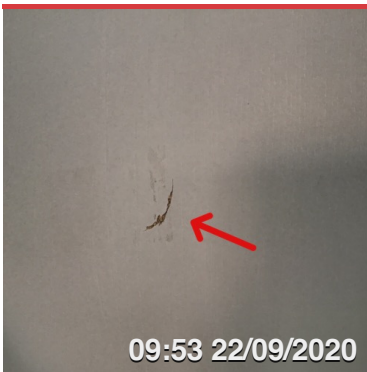
The sink base needs a shelf fitting and the wall needs the expanding foam removing and patching.



LOCATION 42 KITCHEN

Assigned To Joiner

The sink base unit doors need adjusting.



LOCATION 43 KITCHEN

Assigned To Kitchen Fitter

The right hand wall unit end panel is damaged and needs.



LOCATION 44 KITCHEN

Assigned To Decorator/ Electrician

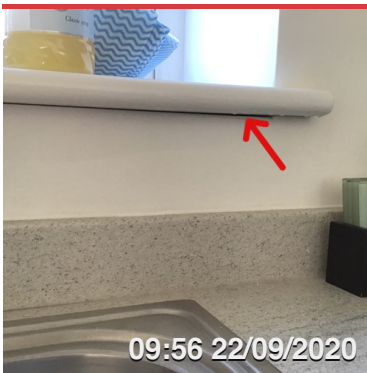
The wall needs filling and touching up above the wall units and the cables need clipping down.



LOCATION 45 KITCHEN

Assigned To Electrician

The cable for the under pelmet lights needs lifting.



LOCATION 46 KITCHEN

Assigned To Decorator

The window board needs caulking underneath.



LOCATION 47 UTILITY

Assigned To Decorator

The door needs sanding above the handle.



LOCATION 48 UTILITY

Assigned To Decorator

The skirting boards need caulking at the door casing.



LOCATION 49 UTILITY

Assigned To Decorator

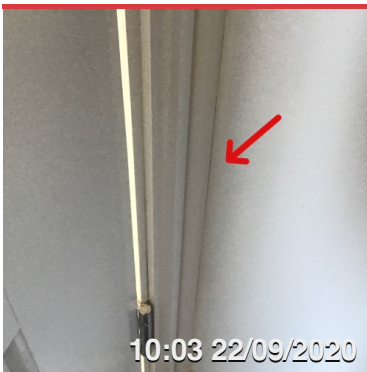
The wall needs filling around the pipes underneath the boiler.



LOCATION 50 UTILITY

Assigned To Decorator

The top of the skirting board needs caulking.



LOCATION 51 UTILITY

Assigned To Decorator

The quadrant needs caulking behind the door.



LOCATION 52 STAIRS TO FIRST FLOOR

Assigned To Decorator

The right hand string needs filling.



LOCATION 53 STAIRS TO FIRST FLOOR

Assigned To Decorator

The wall needs touching up underneath the handrail, and the holes need filling.



LOCATION 54 STAIRS TO FIRST FLOOR

Assigned To Decorator

The left hand string needs sanding.



LOCATION 55 STAIRS TO FIRST FLOOR

Assigned To Decorator

The bottom of the half newel needs caulking.



LOCATION 56 STAIRS TO FIRST FLOOR

Assigned To Decorator

The paint run at the top of the right hand string needs removing.



LOCATION 57 STAIRS TO FIRST FLOOR

Assigned To Decorator

The handrail needs caulking.



LOCATION 58 LANDING

Assigned To Decorator

The window board needs filling.



LOCATION 59 LANDING

Assigned To Decorator

The skirting needs caulking and the architrave edge needs painting to the bathroom door.



LOCATION 60 LANDING

Assigned To Decorator

The wall needs touching up around the isolator switch.



LOCATION 61 LANDING

Assigned To Decorator

The top of the newel cap needs touching up.



LOCATION 62 LANDING

Assigned To Decorator

The hole in the half newel needs filling and the skirting board needs painting.



LOCATION 63 BEDROOM 2

Assigned To Decorator

The skirting is damaged and needs filling and touching up



LOCATION 64 BEDROOM 2

Assigned To Decorator

The wardrobe shelf needs painting in places.



LOCATION 65 BEDROOM 2

Assigned To Decorator

The paint needs removing from the wall and the edge of the wardrobe shelf needs sanding.



LOCATION 66 BEDROOM 2

Assigned To Decorator

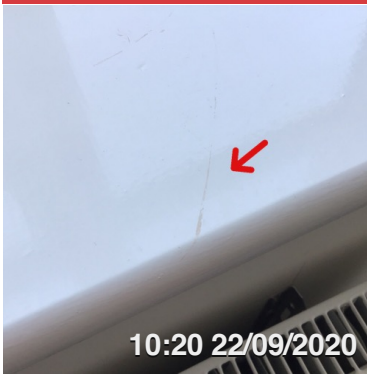
The wardrobe architraves need caulking.



LOCATION 67 BEDROOM 2

Assigned To Decorator

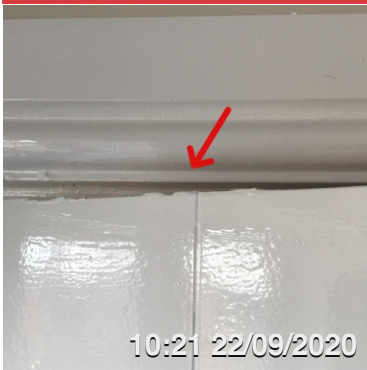
The wardrobe casing needs touching up between the catches where the door has stuck to it.



LOCATION 68 BEDROOM 2

Assigned To Decorator

The window board is marked and needs touching up.



LOCATION 69 BEDROOM 2

Assigned To Decorator

The top edge of the wardrobe doors needs sanding.



LOCATION 70 BATHROOM

Assigned To Joiner

The bath panel needs fitting properly.



LOCATION 71 BATHROOM

Assigned To Mastic

The grout has cracked and needs a bead of sealant as this will continue to crack.



LOCATION 72 BATHROOM

Assigned To Wall Tiller

The bottom of the tile needs grouting.



LOCATION 73 CYLINDER CUPBOARD

Assigned To Decorator

The front of the door is marked and needs touching up.



LOCATION 74 CYLINDER CUPBOARD

Assigned To Decorator

The architrave is damaged and needs filling and the skirting board needs redecorating.



LOCATION 75 CYLINDER CUPBOARD

Assigned To Plumber / Decorator

The flux needs removing from the pipe, and either removing the paint from the other pipe or paint them.



LOCATION 76 CYLINDER CUPBOARD

Assigned To Decorator

The gloss needs painting over and the architrave needs caulking.



LOCATION 77 CYLINDER CUPBOARD

Assigned To Decorator

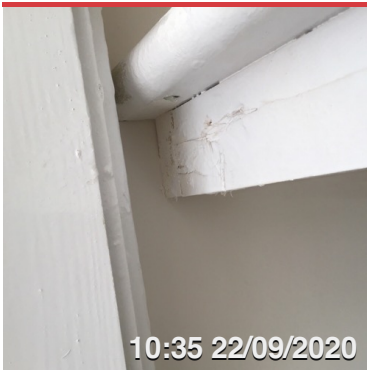
The casing needs filling in several places and repainting.



LOCATION 78 BEDROOM 1

Assigned To Decorator

The ceiling needs touching up above the bed.



LOCATION 79 BEDROOM 1

Assigned To Decorator

The wardrobe shelf needs painting and the frame sanding and filling.



LOCATION 80 BEDROOM 1

Assigned To Joiner

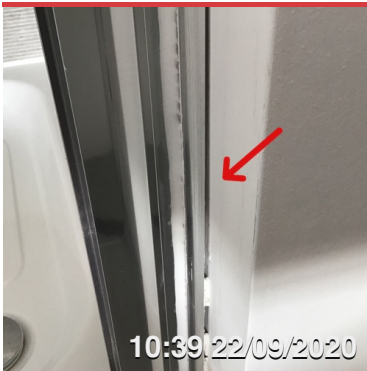
The wardrobe casing needs a quadrant or bead fitting.



LOCATION 81 BEDROOM 1

Assigned To Decorator

The bottom of the wardrobe doors needs sanding.



LOCATION 82 EN SUITE

Assigned To Decorator

The tile trim to both sides of the shower need caulking.



LOCATION 83 EN SUITE

Assigned To Decorator

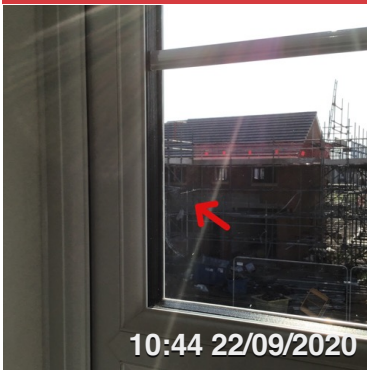
The skirting board behind the radiator needs caulking.



LOCATION 84 EN SUITE

Assigned To Decorator

The door edge needs filling.



LOCATION 85 BEDROOM 1

Assigned To Window Fitter

The glass is possibly scratched and visible from 2m.



LOCATION 86 BEDR4

Assigned To Decorator

The casing needs filling in several places.



LOCATION 87 BEDROOM 4

Assigned To Decorator

The ceiling needs filling around the light.



LOCATION 88 BEDROOM 3

Assigned To Decorator

The wall needs fine filling.



LOCATION 89 BEDROOM 3

Assigned To Decorator

The pencil lines need removing from behind the radiator.



LOCATION 90 BEDROOM 3

Assigned To Decorator

The ceiling needs touching up.



LOCATION 91 BEDROOM 3

Assigned To Decorator

The door edge needs filling around the latch.



LOCATION 92 BEDROOM 3

Assigned To Decorator

The casing and architrave need caulking.



LOCATION 93 ROOF SPACE

Assigned To Labourer

The insulation needs tidying.



LOCATION 94 BEDROOM 3

Assigned To Window Fitter

The bars are missing in the glazing unit.



LOCATION 95 EN SUITE

Assigned To Decorator

The ceiling needs sanding and filling where it has previously been patched.