



I Lively (Former CEnv FCIOB MCABE)
Lively Professional Services Ltd

37 STAUNTON DRIVE CARLISLE CUMBRIA CA1 3GU

Snagging Report

Friday, 14 August 2020

88 Issues Identified

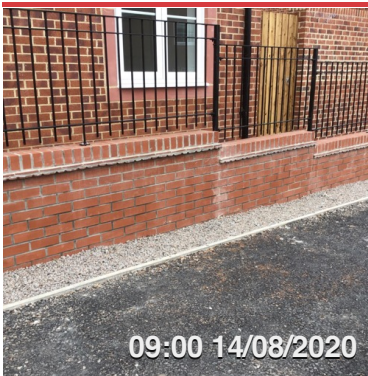


LOCATION 1 37 STAUNTON DRIVE CARLISLE

Assigned To Identification

Summary

There are a number of issues highlighted which could have been avoided with more attention to detail, as an example the steps to the left of the front door have been bedded on different coloured mortar which needs rectifying.



LOCATION 2 FRONT ELEVATION

Assigned To Brick Cleaner

The retaining and garden wall has mortar staining and needs cleaning.



LOCATION 3 FRONT ELEVATION

Assigned To Railing Contractor

The post is loose and needs fixing.



LOCATION 4 FRONT ELEVATION

Assigned To Bricklayer

The brick has been damaged when drilling the railing bracket.



LOCATION 5 FRONT ELEVATION

Assigned To Bricklayer

The brick is damaged one needs replacing on the retaining wall.



LOCATION 6 FRONT ELEVATION

Assigned To Bricklayer

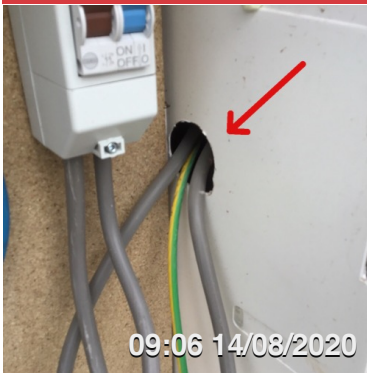
The lead flashing over the canopy needs pointing.



LOCATION 7 FRONT ELEVATION

Assigned To Bricklayer

The rawl plugs need removing where the plot board has been and pointing.



LOCATION 8 FRONT ELEVATION

Assigned To Electrician

The hole in the electric box needs sealing.



LOCATION 9 FRONT ELEVATION

Assigned To Mastic

The cover mould fitted to the top of the front windows needs sealing.



LOCATION 10 LEFT HAND ELEVATION

Assigned To Plumber

The stone packer underneath the gas flue needs removing and the flue needs sealing.



LOCATION 11 REAR GARDEN WALL

Assigned To Bricklayer

The holes in the brick need fully filling or replacing with solid brick.



LOCATION 12 REAR GARDEN WALL

Assigned To Bricklayer

The hole in the brick needs pointing or replacing with a solid brick.



LOCATION 13 REAR GARDEN WALL

Assigned To Bricklayer

The bed joint need re pointing in several areas, where the bricklayer has had his pins



LOCATION 14 REAR GARDEN WALL

Assigned To Bricklayer

The holes in the brick need pointing or replacing with a solid brick.



LOCATION 15 REAR GARDEN WALL

Assigned To Bricklayer

The drill holes in the bed joint need pointing.



LOCATION 16 REAR ELEVATION

Assigned To Bricklayer

Small area of pointing required on the left hand corner.



LOCATION 17 REAR ELEVATION

Assigned To Bricklayer

The damaged brick needs replacing behind the Telecoms cover.



LOCATION 18 REAR GARDEN WALL

Assigned To Bricklayer

The mortar droppings need cleaning off the top of the rear garden wall.



LOCATION 19 REAR GARDEN WALL

Assigned To Bricklayer

The two damaged bricks need replacing.



LOCATION 20 REAR GARDEN WALL

Assigned To Site Manager

Please check the height of the garden wall in relation to the rear gardens ground level.



LOCATION 21 REAR ELEVATION

Assigned To Joiner

The fascia board needs a joint fitting where it has been joined and an end cap to close the gap at the end of the fascia to preventing infestation.



LOCATION 22 REAR ELEVATION

Assigned To Window Fitter / Plastic Surgeon

The patio handle is chipped and needs replacing, the frame is also scratched above it and needs repairing.



LOCATION 23 REAR ELEVATION

Assigned To Mastic

The cover mould fitted to the patio and bedroom window needs sealing.



LOCATION 24 HALL

Assigned To Plastic Surgeon

The front door is scratched in several places and needs repairing.



LOCATION 25 HALL

Assigned To Joiner

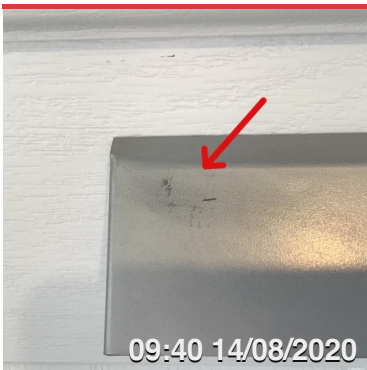
The metal weather strip on the front door is damaged and needs replacing.



LOCATION 26 HALL

Assigned To Joiner

The front letter plate is damaged and needs replacing.



LOCATION 27 HALL

Assigned To Joiner

The rear letter plate cover is damaged and needs replacing.



LOCATION 28 HALL

Assigned To Plastic Surgeon

The rear of the front door is marked and needs repairing.



LOCATION 29 HALL

Assigned To Decorator

The left hand front door reveal needs touching up.



LOCATION 30 HALL

Assigned To Plastic Surgeon

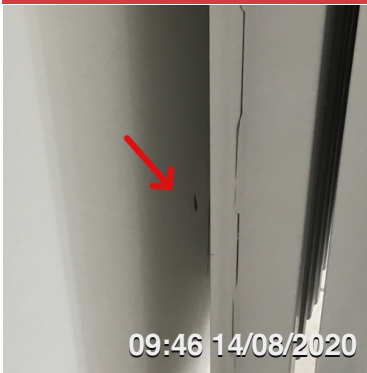
The corner of the consumer unit is damaged and needs repairing.



LOCATION 31 HALL

Assigned To Floor Tiller

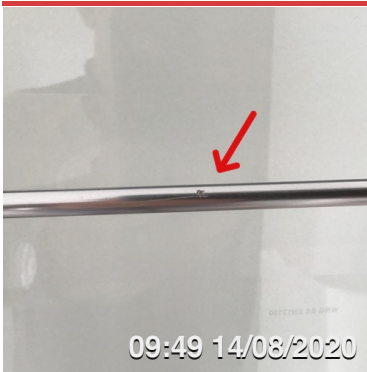
The floor tile is chipped at the lounge door.



LOCATION 32 HALL

Assigned To Decorator / Plumber

The wall behind the radiator needs filling where the plasterboard paper is delaminating.
The radiator is also out of level.



LOCATION 33 LOUNGE

Assigned To Joiner

The glazing bar in the door is damaged and needs replacing.



LOCATION 34 LOUNGE

Assigned To Joiner

The gap underneath the door is excessive.



LOCATION 35 LOUNGE

Assigned To Plastic Surgeon

The top edge of the window opening sash has been damaged when materials have been brought through it, and needs repairing.



LOCATION 36 LOUNGE

Assigned To Window Fitter

The glass in the fixed unit is cracked and scratched in several places.



LOCATION 37 LOUNGE

Assigned To Decorator

The wall needs touching up underneath the window board.



LOCATION 38 LOUNGE

Assigned To Plumber

The radiator is out of level.



LOCATION 39 LOUNGE

Assigned To Decorator

The skirting board needs filling to the right of the patio door.



LOCATION 40 LOUNGE

Assigned To Window Fitter

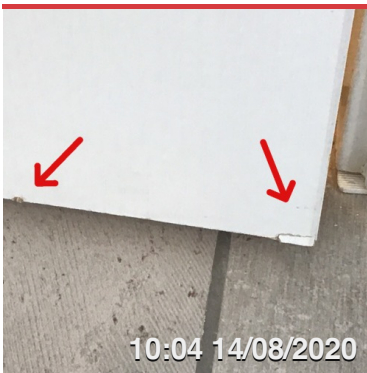
The screws in the patio handles are rusty and need replacing.



LOCATION 41 LOUNGE

Assigned To Plumber

The corner of the radiator needs touching up.



LOCATION 42 DOWNSTAIRS CLOAKS

Assigned To Joiner

The bottom of the door is damaged and needs repairing or replacing.



LOCATION 43 DOWNSTAIRS CLOAKS

Assigned To Joiner

There has clearly been a setting out issue with the drain position.

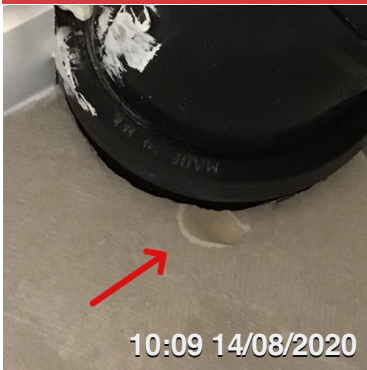
The expanding foam needs cleaning off and preferably box in the soil pipe.



LOCATION 44 DOWNSTAIRS CLOAKS

Assigned To Joiner/ Decorator

The wall needs filling around the pipes behind the toilet.



LOCATION 45 DOWNSTAIRS CLOAKS

Assigned To Floor Tiller

The floor tile is chipped next to the soil pipe and needs replacing.



LOCATION 46 DOWNSTAIRS CLOAKS

Assigned To Decorator

The edge of the tile trim needs caulking.



LOCATION 47 KITCHEN

Assigned To Decorator

The casing around the keeper needs touching up.



LOCATION 48 KITCHEN

Assigned To Mastic

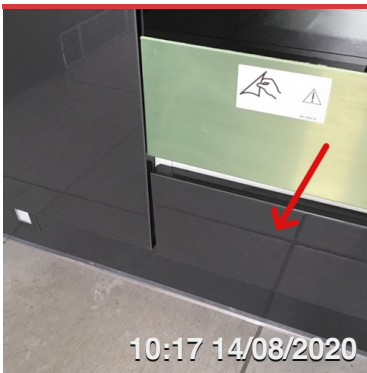
Both sides of the kitchen door tiles needs sealing.



LOCATION 49 KITCHEN

Assigned To Appliance Fitter

The hob needs refitting level.



LOCATION 50 KITCHEN

Assigned To Kitchen Fitter

The panel underneath the oven is loose.



LOCATION 51 KITCHEN

Assigned To Kitchen Fitter

The plinth underneath the oven needs refitting.



LOCATION 52 KITCHEN

Assigned To Plumber

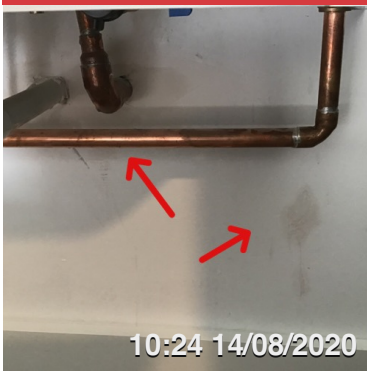
The screw in the plinth heater cover has been over tightening and is buckling the cover.



LOCATION 53 KITCHEN

Assigned To Decorator

The expanding foam needs cleaning from the wires above the extractor and the wall needs filling and touching up.



LOCATION 54 KITCHEN

Assigned To Decorator

The wall underneath the boiler needs touching up.



LOCATION 55 KITCHEN

Assigned To Decorator

The wall and ceiling in the boiler cupboard need sanding and painting.



LOCATION 56 KITCHEN

Assigned To Plastic Surgeon

The worktop is scratched to the right of the sink and needs repairing or replacing.



LOCATION 57 KITCHEN

Assigned To Plastic Surgeon

The sing is scratched in several places and needs repairing or replacing.



LOCATION 58 KITCHEN

Assigned To Kitchen Fitter

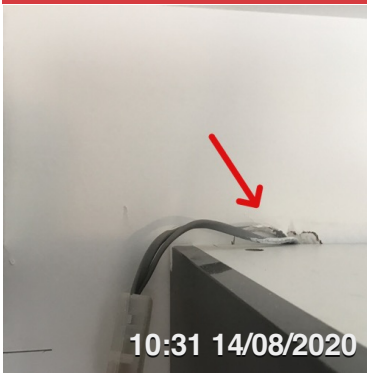
The panel below the boiler cupboard door is scratched and needs replacing.



LOCATION 59 KITCHEN

Assigned To Decorator

The wall needs touching up above the fridge freezer housing.



LOCATION 60 KITCHEN

Assigned To Decorator

The wall needs filling and touching up above the wall units



LOCATION 61 KITCHEN

Assigned To Kitchen Fitter

The plastic trim on the bottom of the plinths is damaged in several places and needs replacing.



LOCATION 62 STAIRS TO FIRST FLOOR

Assigned To Decorator

The filler needs sanding off the newel and the wall touching up behind it.



LOCATION 63 STAIRS TO FIRST FLOOR

Assigned To Decorator

He quadrant needs caulking and the newel needs filling where it has been damaged.



LOCATION 64 STAIRS TO FIRST FLOOR

Assigned To Decorator

The right hand string needs filling and the wall touching up.



LOCATION 65 STAIRS TO FIRST FLOOR

Assigned To Decorator

The right hand string needs caulking.



LOCATION 66 STAIRS TO FIRST FLOOR

Assigned To Decorator

The top of the quadrant needs sealing.



LOCATION 67 STAIRS TO FIRST FLOOR

Assigned To Decorator

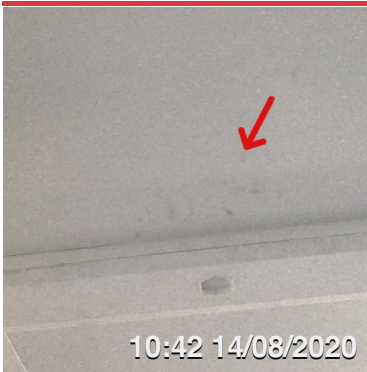
The beading mitre needs sanding and filling, the string also need filling.



LOCATION 68 STAIRS TO FIRST FLOOR

Assigned To Joiner

The kite winders are loose on the risers and need more glue, or glue blocks fitting to prevent them from moving.



LOCATION 69 LANDING

Assigned To Decorator

The ceiling needs touching up next to the loft trap.



LOCATION 70 LANDING

Assigned To Decorator

The corner bead needs touching up.



LOCATION 71 LANDING

Assigned To Decorator

The bathroom architrave needs touching up.



LOCATION 72 BEDROOM 2

Assigned To Decorator

The door is damaged and needs touching up.



LOCATION 73 BEDROOM 3

Assigned To Plumber

The radiator is not sat on the bottom bracket.



LOCATION 74 BEDROOM 3

Assigned To Decorator

The paint drips need removing from the window board.



LOCATION 75 LANDING CUPBOARD

Assigned To Mastic

The pipe boxing needs the edges sealing.



LOCATION 76 BATHROOM

Assigned To Decorator/ Plumber

The wall around the towel radiator pipes needs sanding and shrouds fitting.



LOCATION 77 BATHROOM

Assigned To Window Fitter

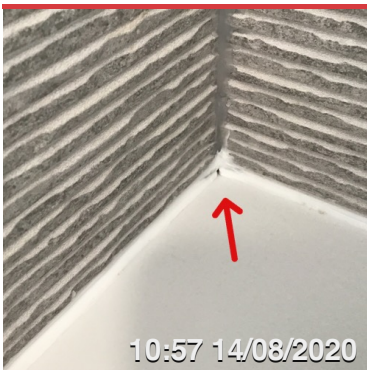
The bathroom window handle is damaged and needs replacing.



LOCATION 78 BATHROOM

Assigned To Plastic Surgeon

The bathroom door is damaged.



LOCATION 79 BATHROOM

Assigned To Mastic

The sealant on the rear of the bath has a pin hole.



LOCATION 80 BATHROOM

Assigned To Wall Tiller

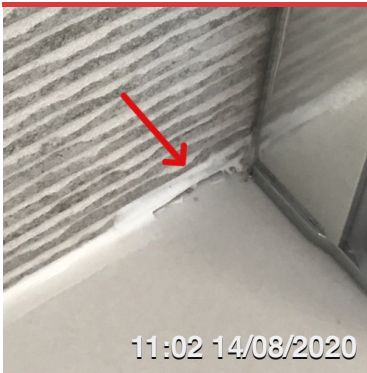
The pin hole needs re grouting to the left of the shower head.



LOCATION 81 BATHROOM

Assigned To Plumber

The shower control is slightly not level.



LOCATION 82 BATHROOM

Assigned To Mastic

The sealant is missing in the corner next to the shower screen.



LOCATION 83 BATHROOM

Assigned To Wall Tiller

The tiles need the pin holes grouting in the sink splash back.



LOCATION 84 BEDROOM 1

Assigned To Joiner

The bottom of the door is damaged.



LOCATION 85 EN SUITE

Assigned To Roman Shower Doors

The left hand cap is missing on the shower door frame.



LOCATION 86 LANDING

Assigned To Joiner

The loft trap door is catching the architrave.



LOCATION 87 ROOF SPACE

Assigned To Electrician

The insulated extractor vent ducts from the bathroom and en Suite need mechanically fixing to the roof tile vent pipe.



LOCATION 88 ROOF SPACE

Assigned To Roofer

The cut out in the felt around the tile vent is excessive.