



I Lively
Lively Professional Services Ltd

**14 ATHERTON DRIVE, PRESCOT,
MERSEYSIDE, L35 7AG**

Monday, 25 March 2019

94 Issues Identified



LOCATION 1 14 ATHERTON DRIVE

Assigned To Plot Identification.



LOCATION 2 FRONT ELEVATION

Assigned To Groundworker

The drive needs topping.



LOCATION 3 FRONT ELEVATION

Assigned To Roofer/ Plumber

The first dry verge needs a mechanical fixing and the gutter extending to the end of the dry verge to stop it dripping when it rains.



LOCATION 4 FRONT ELEVATION

Assigned To Plumber

Remove the excess lead sealant from the brickwork to the right of the canopy.



LOCATION 5 FRONT ELEVATION

Assigned To Landscaper

Turf required to the front garden. This was completed during the inspection, please ensure it is watered well.



LOCATION 6 FRONT ELEVATION

Assigned To Roofer

The clay verges need a bottom fixing.



LOCATION 7 FRONT ELEVATION

Assigned To Bricklayer/ Mastic

The front door threshold needs pointing and the dpc removing, the threshold also needs the sill sealing to stop water penetration.



LOCATION 8 FRONT ELEVATION

Assigned To Roofer

The bottom tile is kicking on the valley.



LOCATION 9 FRONT ELEVATION

Assigned To Bricklayer

Two perps need pointing.



LOCATION 10 FRONT ELEVATION

Assigned To Bricklayer

The mortar joint needs pointing where it has been ground out.



LOCATION 11 FRONT ELEVATION

Assigned To Bricklayer

Weep holes should be every 450mm unless stated otherwise.



LOCATION 12 LEFT HAND ELEVATION

Assigned To Fencer

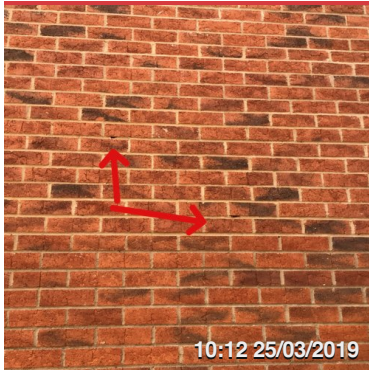
The fencing needs finishing, and the blow off sealing. The fencer was working on the fence during the inspection.



LOCATION 13 RIGHT HAND ELEVATION

Assigned To Bricklayer

There is a damaged brick on the right hand corner.



LOCATION 14 RIGHT HAND ELEVATION

Assigned To Bricklayer

Small area of brickwork requires pointing.



LOCATION 15 GARAGE

Assigned To Mastic

The mastic application is very poor and needs reapplying.



LOCATION 16 GARAGE

Assigned To Joiner

The garage door head needs finishing, there is a piece of fascia on the internal side of the garage lintel.



LOCATION 17 GARAGE

Assigned To Groundworker

The gap below the garage door is excessive.



LOCATION 18 GARAGE

Assigned To Joiner

The finish around the internal garage door needs attention, poor finish.



LOCATION 19 GARAGE

Assigned To Labourer

Loose timber needs removing from the roof space.



LOCATION 20 GARAGE

Assigned To Bricklayer

The block pillars need extending up the pike to give restraint against win loading. (NHBC 10.1.5)



LOCATION 21 REAR ELEVATION

Assigned To Groundworker

The limestone chippings need finishing and the debris removing.
The electric feed to the garage needs moving for the gate post to fit.



LOCATION 22 REAR ELEVATION

Assigned To Mastic

The underside of the patio needs sealing.



LOCATION 23 REAR ELEVATION

Assigned To Cleaner

The soffit needs cleaning.



LOCATION 24 GARAGE

Assigned To Mastic/ Decorator

The frame needs sealing and the sill painting.



LOCATION 25 REAR ELEVATION

Assigned To Fencer/ Landscaper

The rear fence needs finishing and the garden landscaping. This was being done during the inspection. Please ensure the turf is watered well.



LOCATION 26 GARAGE

Assigned To Groundworker

The tanking needs extending or the chippings lowering slightly, the tanking does not appear to be sealed against the brickwork which will let water ingress.



LOCATION 27 REAR ELEVATION

Assigned To Window Fitter

The right hand patio door bottom and middle hinges are damaged.



LOCATION 28 REAR ELEVATION

Assigned To Cleaner

The writing needs removing from the kitchen lintel.



LOCATION 29 EXTERNAL

Assigned To General Note

Once the house has settled ensure the underside of the frames are sealed.



LOCATION 30 REAR ELEVATION

Assigned To Cleaner

Remove the plastic protection from the window.



LOCATION 31 FRONT DOOR

Assigned To Plastic Surgeon.

The front door is scratched in numerous places.



LOCATION 32 HALL

Assigned To Door Fitter

Button missing from the door glazing bead.



LOCATION 33 HALL

Assigned To Decorator

Touch up around the fan isolator for the downstairs cloaks.



LOCATION 34 DOWN STAIRS CLOAKS

Assigned To Decorator

Re paint under the sink unit



LOCATION 35 DOWN STAIRS CLOAKS

Assigned To Joiner

Align the sink base unit door.



LOCATION 36 DOWN STAIRS CLOAKS

Assigned To Cleaner

Clean the silicone off the unit and the sink is running out of line with the mirror on the right hand side.



LOCATION 37 DOWN STAIRS CLOAKS

Assigned To Decorator

Minor touch up to the front downlight.



LOCATION 38 HALL

Assigned To Decorator

Nail pop and touch up around the bell box.



LOCATION 39 LOUNGE

Assigned To Window Fitter

The right hand trickle vent needs tightening back to the frame.



LOCATION 40 LOUNGE

Assigned To Plastic Surgeon

The right hand opening window frame is damaged where materials have been brought in through the window.



LOCATION 41 LOUNGE

Assigned To Plastic Surgeon

The left hand window frame is damaged as the right hand one.



LOCATION 42 LOUNGE

Assigned To Decorator

The wall needs filling to the left of the radiator.



LOCATION 43 LOUNGE

Assigned To Plasterer

The lounge ceiling is showing board and trowel marks.



LOCATION 44 LOUNGE

Assigned To Electrician

The plate front needs fitting to the fibre cables.



LOCATION 45 LOUNGE

Assigned To Decorator

Fill and touch up around the socket.



LOCATION 46 KITCHEN

Assigned To Decorator

Fill and touch up around the light switch.



LOCATION 47 KITCHEN

Assigned To Electrician

The cables in the understairs cupboard needs shortening.



LOCATION 48 KITCHEN

Assigned To Decorator

The utility area ceiling needs filling, poor plastering.



LOCATION 49 KITCHEN

Assigned To Decorator

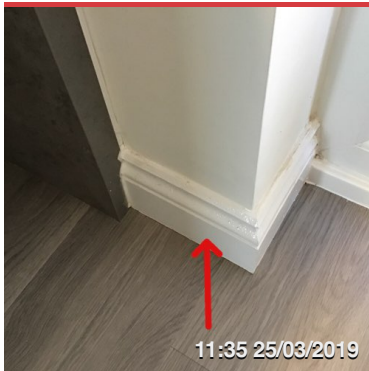
The nib in the utility area needs attention poor plastering.



LOCATION 50 KITCHEN

Assigned To Plasterer

The kitchen ceiling is showing board joints and trowel marks.



LOCATION 51 KITCHEN

Assigned To Decorator

The skirting board to the left of the patio needs attention.



LOCATION 52 KITCHEN

Assigned To Decorator

The wall above the window needs sanding.



LOCATION 53 KITCHEN

Assigned To Joiner

The sink base shelf cut out needs sealing.



LOCATION 54 KITCHEN

Assigned To Electrician

The cooker has no power, it is possibly not connected at the rear.



LOCATION 55 KITCHEN

Assigned To Electrician

The left hand light needs the bulb fitting.



LOCATION 56 KITCHEN

Assigned To Plumber

The shroud needs fitting to the flue.



LOCATION 57 KITCHEN

Assigned To Plasterer

The finish under the boiler needs attention.



LOCATION 58 KITCHEN

Assigned To Plasterer

The ceiling line in the kitchen area needs attention.



LOCATION 59 KITCHEN

Assigned To Plasterer / Electrician

There is a hole above the right hand wall units and the cables are visible.



LOCATION 60 KITCHEN

Assigned To Plasterer/ Electrician

There is a hole above the left hand wall units and the wires need tidying as they are visible from the room.



LOCATION 61 KITCHEN

Assigned To Decorator

Tidy around the sockets.



LOCATION 62 KITCHEN

Assigned To Kitchen Fitter

The left hand drawer handle is damaged and scratched.



LOCATION 63 STAIRS

Assigned To Carpet Fitter

The finish on the bulnosed step needs attention and there is paint on the carpet.



LOCATION 64 STAIRS

Assigned To Decorator

There is a board joint that needs filling on the right hand wall.



LOCATION 65 STAIRS

Assigned To Decorator

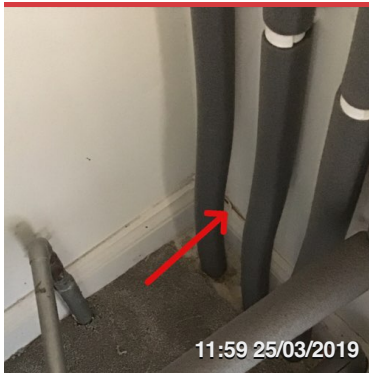
The bead to the top of left hand string needs filling.



LOCATION 66 CYLINDER CUPBOARD

Assigned To Decorator

Touch up around the emersion heater switch.



LOCATION 67 CYLINDER CUPBOARD

Assigned To Decorator

The skirting needs caulking and a general touch up.



LOCATION 68 CYLINDER CUPBOARD

Assigned To Joiner

The door is damaged on the top.



LOCATION 69 BEDROOM 3

Assigned To Joiner

The door is catching on the top.



LOCATION 70 BEDROOM 3

Assigned To Decorator

Touch up around the sockets dirty marks left by the cleaner.



LOCATION 71 BEDROOM 3

Assigned To Window Fitter

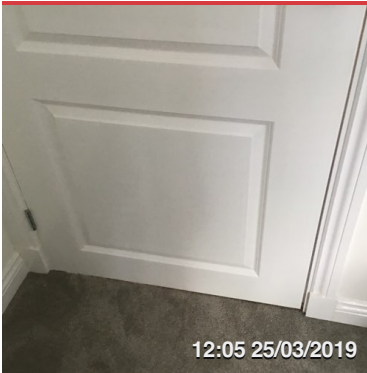
The window sill is damaged and needs replacing.



LOCATION 72 BEDROOM 3

Assigned To Decorator

The left hand window reveal needs filling and touch up.



LOCATION 73 BEDROOM 2

Assigned To Joiner

The door needs packing out on the bottom hinge to adjust the margins.



LOCATION 74 BEDROOM 2

Assigned To Joiner

The wardrobe door is difficult to close with the handle when fully opened.



LOCATION 75 BATHROOM

Assigned To Decorator

The top of the door edge is rough.



LOCATION 76 BATHROOM

Assigned To Joiner

The bath panel fixings need screw covers.



LOCATION 77 BATHROOM

Assigned To Joiner

The bath panel needs framing out at the top and the panel is running out of line.



LOCATION 78 BATHROOM

Assigned To Wall Tiller

The grout needs filling in the joint to prevent water penetration.



LOCATION 79 BATHROOM

Assigned To Plumber

The left hand shower control cover is loose, please check the pies have been sealed.



LOCATION 80 BATHROOM

Assigned To Joiner

The unit fronts need aligning.



LOCATION 81 BATHROOM

Assigned To Furniture Fitter

The sink base unit shelf is missing a bracket.



LOCATION 82 BATHROOM

Assigned To Decorator

Minor touch up required around the downlights.



LOCATION 83 BEDROOM 1

Assigned To Joiner

The door needs packing out to even the margins, and the door tightening on the latch as it rattles.



LOCATION 84 BEDROOM 1

Assigned To Plastic Surgeon / Decorator

The right hand window opening frame is damaged, and the window sill needs attention.



LOCATION 85 BEDROOM 1

Assigned To Joiner

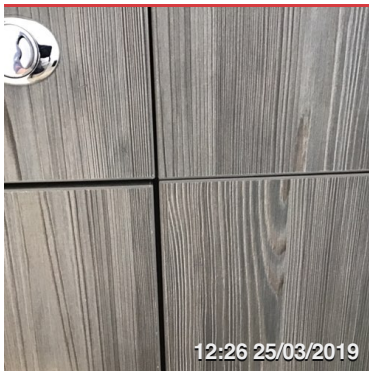
The en suite door is catching and does not latch.



LOCATION 86 EN SUITE

Assigned To Plasterer

The wall to the right of the window sill needs attention.



LOCATION 87 EN SUITE

Assigned To Joiner

The unit doors and panels need aligning



LOCATION 88 EN SUITE

Assigned To Mastic

The mastic behind the toilet is messy, and the toilet seat is marked, also check behind the radiator for fixing holes that need filling.



LOCATION 89 EN SUITE

Assigned To Joiner / Plumber/ Decorator

The finish to the right of the shower needs finishing and the shower needs a plug.



LOCATION 90 EN SUITE

Assigned To Cleaner

The shower base needs cleaning.



LOCATION 91 EN SUITE

Assigned To Plumber/ Wall Tiller

There is a pin hole behind the right hand water feed and the covers need fitting properly check the pipes have been sealed.



LOCATION 92 EN SUITE

Assigned To Decorator

The finish around the down lights need attention



LOCATION 93 EN SUITE

Assigned To Decorator

The ceiling needs touching up, red mark.



LOCATION 94 BEDROOM 1 WARDROBE

Assigned To Decorator

The fixing holes for the radiator need the plugs removing and filling.